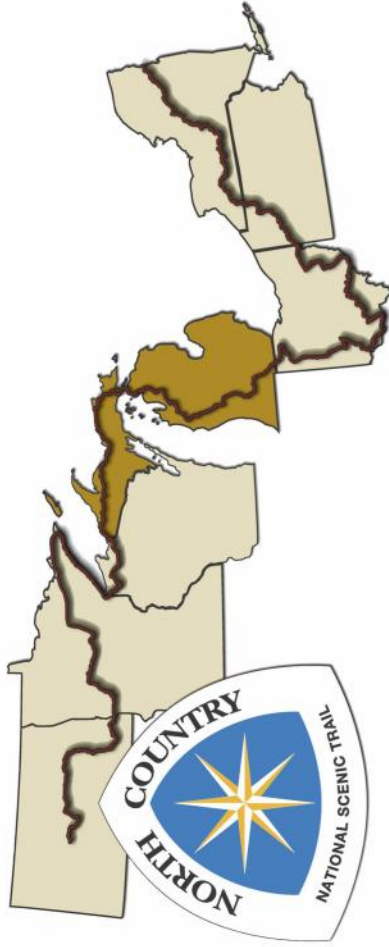


# NORTH COUNTRY NATIONAL SCENIC TRAIL



## The Trail

Be part of something bigger - The North Country National Scenic Trail! The trail winds across 4600 miles and seven states - New York to North Dakota. The trail through Michigan is divided into four chapters - each full of volunteers that expand, improve, and maintain their section.



## Hiawatha Shore-to-Shore Chapter

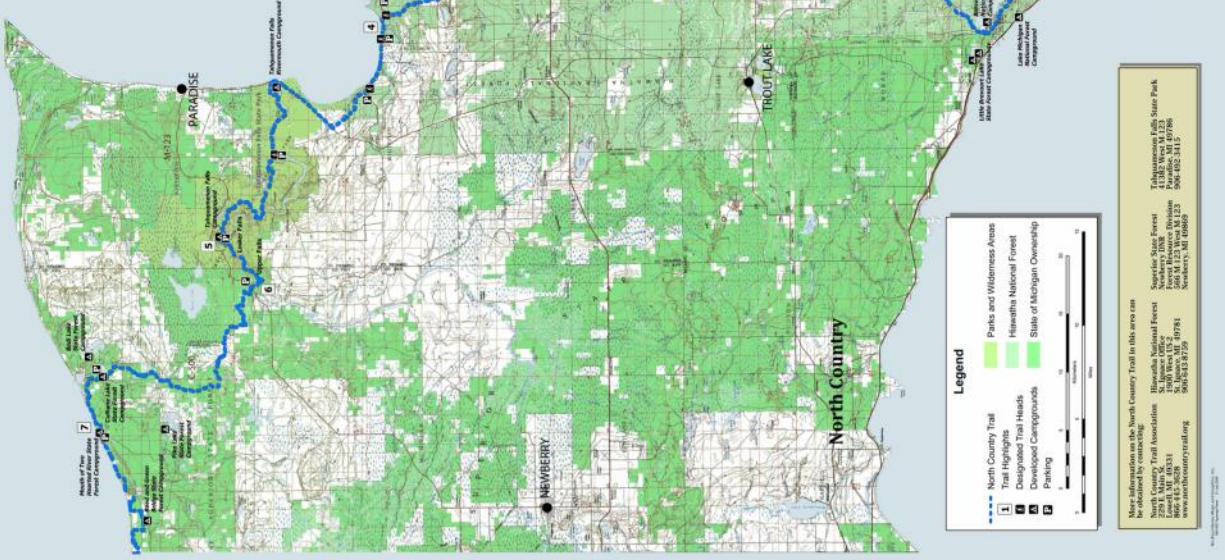
Running through the Hiawatha National Forest our 120 miles of "north woods" feature the Niagara escarpment, Tahquamenon Falls and, the Lake Superior Shoreline.

## Where to Start

The most scenic place to start your hike is at the Castle Rock Trailhead. Take I-75 north, exit at Lant Road, and then veer right onto Castle Rock Rd. to the trailhead at the USFS Rd.



# North Country National Scenic Trail Hiawatha Shore-to-Shore Section



**St. Ignace, Michigan**  
Your "Home Port" to the National Scenic Trail  
Your Adventure Starts Nearby

Map information for the North Country Trail in this area can be obtained by contacting:  
 Hiawatha National Forest  
 2000 West US 2  
 Sault Ste. Marie, MI 49783  
 906.833.8175  
 www.hiawathatrail.org

Statewide State Forest  
 Hiawatha National Forest  
 2000 West US 2  
 Sault Ste. Marie, MI 49783  
 906.833.8175  
 www.hiawathatrail.org